



Barbara Schaaf
illustration • animation



Illustration für Editorial:

- People
- Healthcare
- Infographic
- Character
- Family
- Nature
- Decore

Barbara Schaaf
Diplom-Designerin & Illustratorin

In der Au 52
D-60489 Frankfurt a. M.

fon: +49 (0)69 / 78 80 87 71
mobil: +49 (0)174 / 56 93 51 1

mail@b-schaaf.de

www.b-schaaf-illustration.de

be visual!





Flood of plastc: falling plastic objects fends off a child with an umbrella



Fear of the future: of young people due to climate change and its environmental disasters



Education: External determination of girls in the past and the effects until today



Sleep: the effects on health and beauty



Greta Thunberg



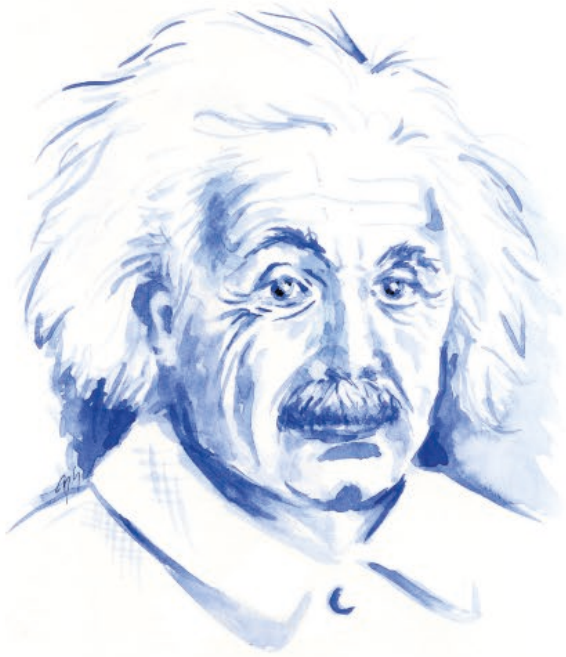
Karl Dall



Joseph Beuys



Sophie Scholl



Albert Einstein



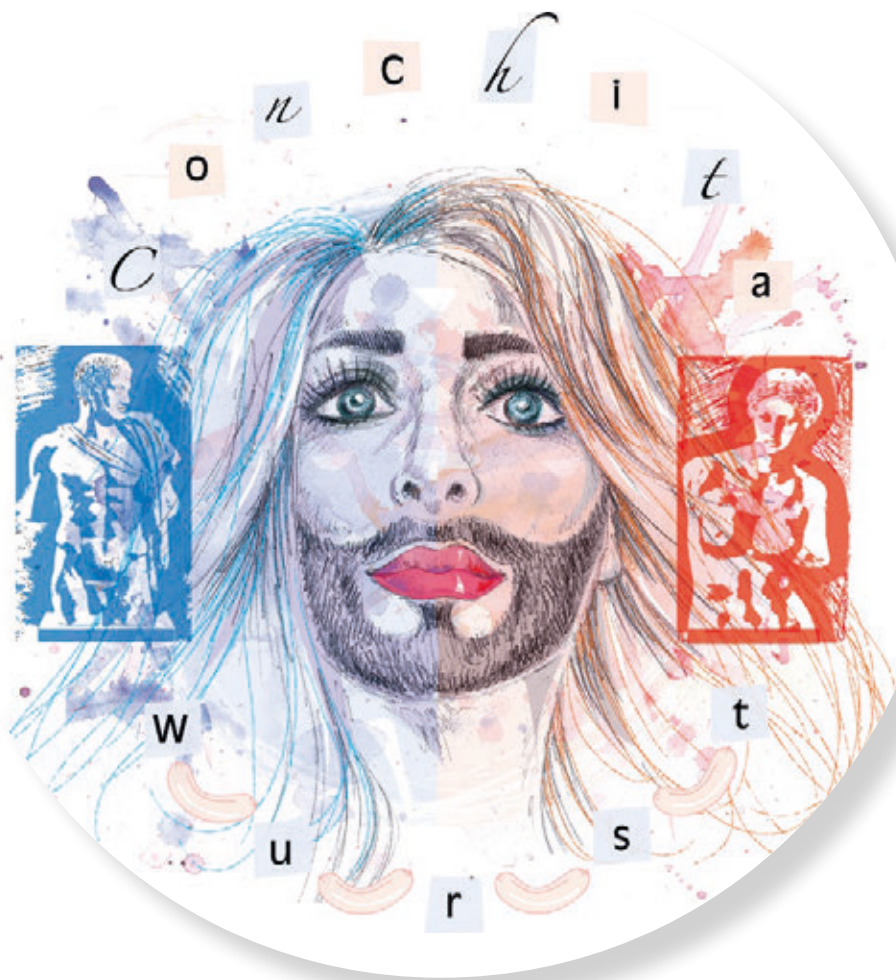
Michaela May



„Miss Marpel“ (Margaret Rutherford)



Karl Lagerfeld



Conchita Wurst: between male and female



Cuban woman: born to be wild



Woman relaxes while diving



fashionable woman in spring



Work-life-balance with meditation

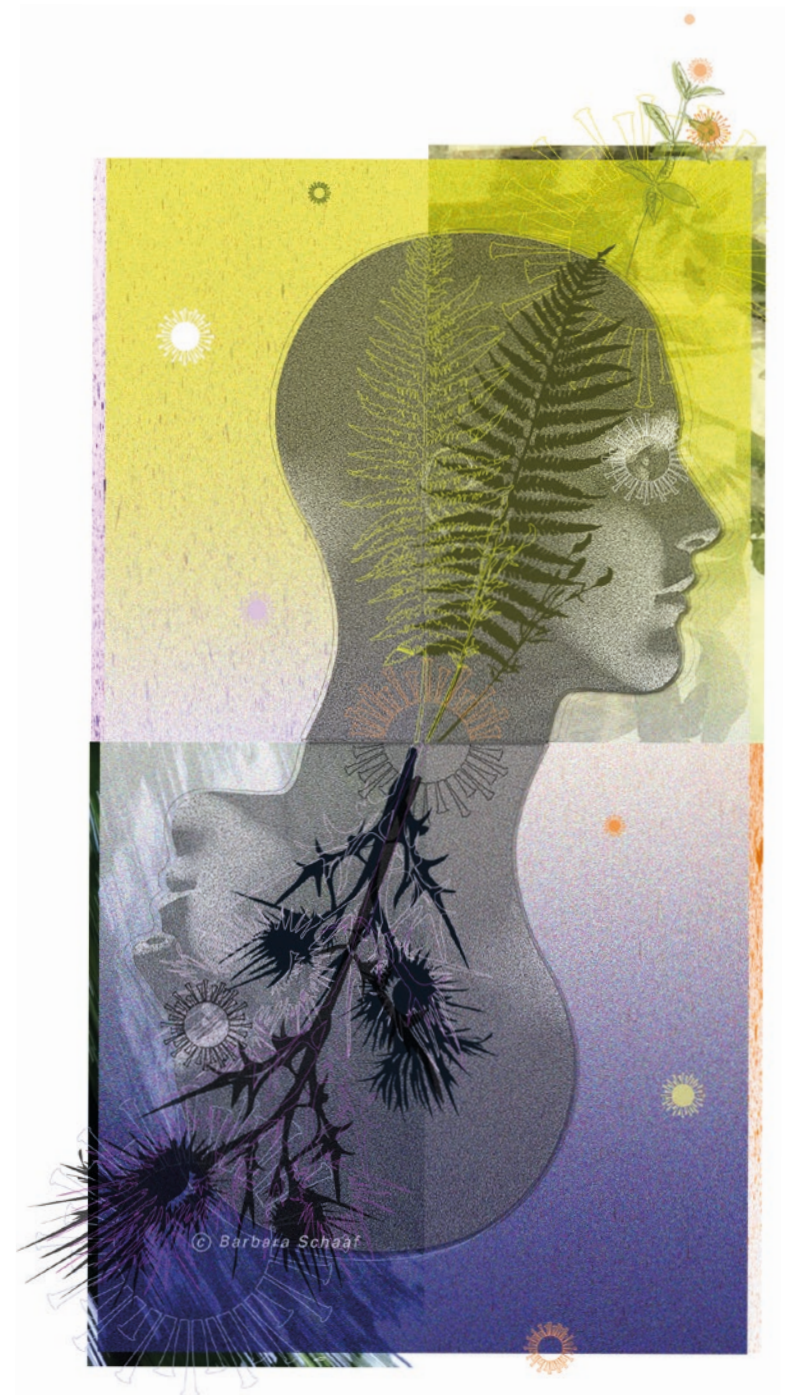
www.b-schaaf-illustration.de



Quote Woman: on the board of management



Creativity defeats work routine



Balance of optimism and pessimism

thank you for visit!

you can see more on my

homepage:

www.b-schaaf-illustration.de



you can follow me on

social media:

- vimeo
- linkedin
- instagram
- facebook

Copyright: all rights by Barbara Schaaf